

FOR EVERY
HOUSE
 IS BUILT BY
 SOMEONE,
 BUT THE
BUILDER
 OF ALL
 THINGS IS
GOD.
 H E B R E W S 3:4

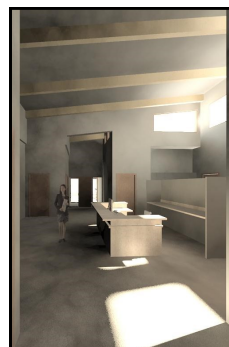


OUR VISION FOR A NEW SYNOD HOUSE

The 2009 Montana Synod Assembly in Great Falls was presented with the vision of a new synod office building. The vision which created a great deal of excitement and discussion was overwhelmingly accepted and approved by the voting members. However, because of economic downturn and the outcomes of the Churchwide Assembly in Minneapolis, the project was moved to the backburner.

Even though the idea wasn't at the forefront it was kept alive by reviewing and modifying the plans, meeting with the architect and pondering the best placement on the property.

In the end, there was no question that time was in our favor, as it allowed us to create a product that will better meet the needs of the entire synod including the staff, with a minimal increase in the initial cost.



In early 2013 the Synod Council declared that the time was right to move forward. The 2013 Synod Assembly enthusiastically reaffirmed its previous 2009 vote and as a result, we are now embarking on an exciting capital campaign to build a new SYNOD HOUSE.

With a strong commitment to the practice of tithing, 10% of all funds raised will be dedicated to our Mission Venture Capital Fund.

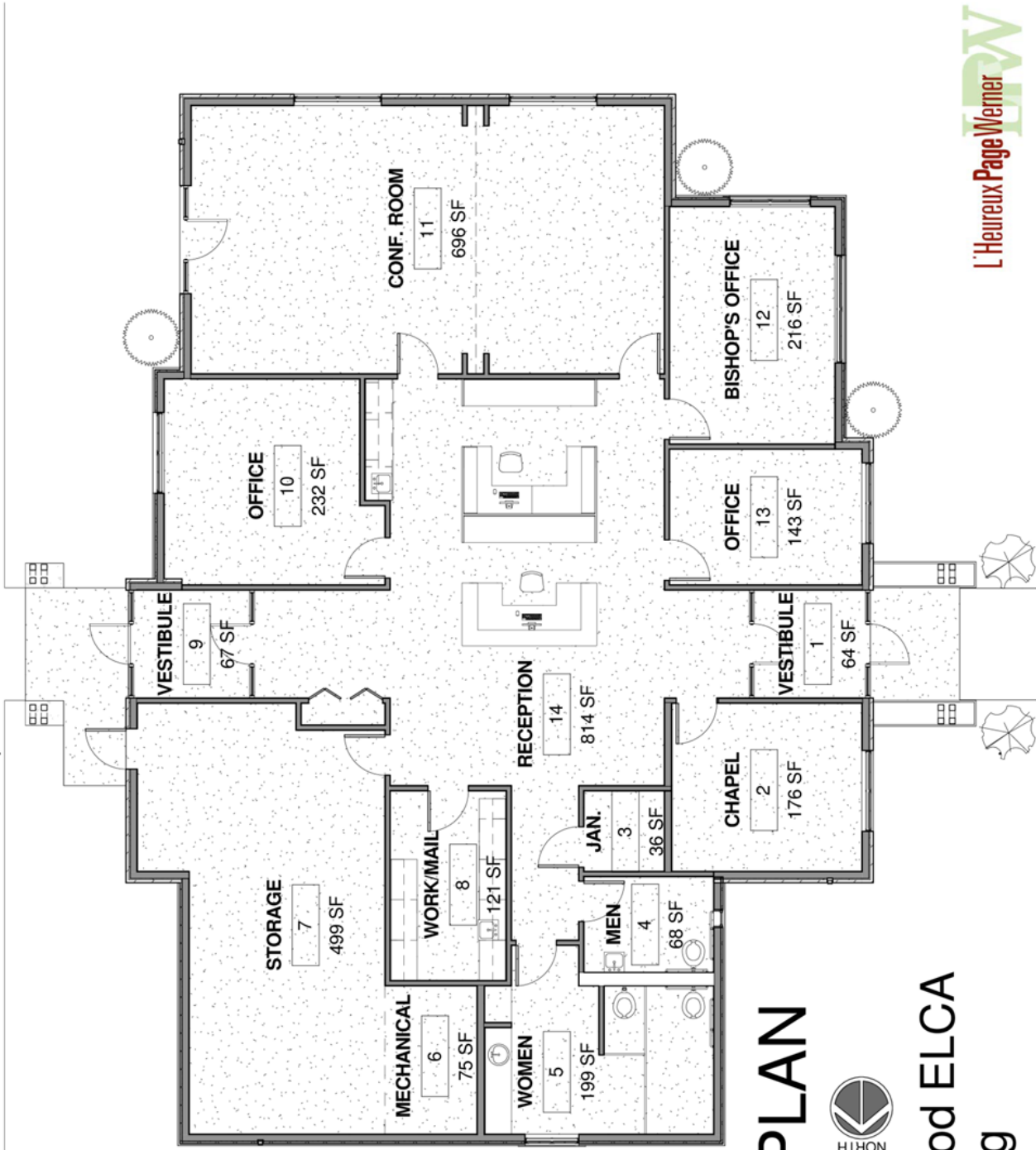
We are excited to invite you to share the vision and to participate in every opportunity to join in building our future together.

Tom Gossack
 Montana Synod Vice President



Synod Office Building Cost/Area

Reception Area	814 SF	\$ 260,480.00
Conference Room	696 SF	\$ 222,720.00
Storage/Mechanical Room	574 SF	\$ 183,680.00
Bishop's Office	216 SF	\$ 69,120.00
Office #2	232 SF	\$ 74,240.00
Office #3	143 SF	\$ 45,760.00
Chapel	176 SF	\$ 56,320.00
Work/Mail Room	121 SF	\$ 38,720.00
Ladies Rest Room	199 SF	\$ 63,680.00
Men's Rest Room	68 SF	\$ 21,760.00
Closet	36 SF	\$ 11,520.00
Vestibules	131 SF	\$ 41,920.00
Total	3406 SF	\$1,089,920.00



13th Ave S



24th St S

FLOOR PLAN



Montana Synod ELCA
Office Building